



1707 Shepard Road
Wildwood, MO 63038

3 acres

FOR SALE

- Road frontage on Shepard Road
- Gently sloping building site with view
- County water
- Wooded behind home site
- Great Price: \$125,000

Directions: Hwy. 109 to Shepard Road. East 1 mile to property on west side of Shepard Road.

For more information, please contact:

Ed Holthaus
314-378-0060
ed@buymud.com

Holthaus Realty & Development, Inc.
18102A Chesterfield Airport Road
Chesterfield, MO 63005-1117

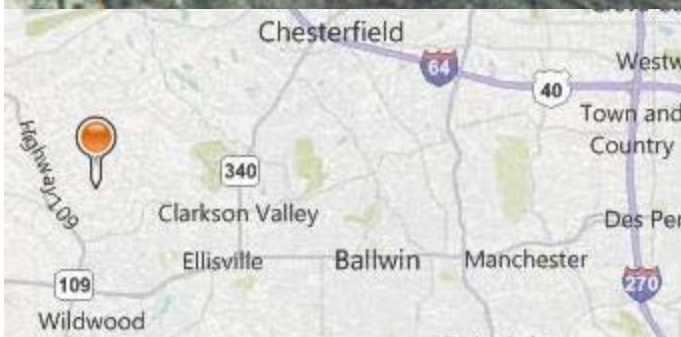
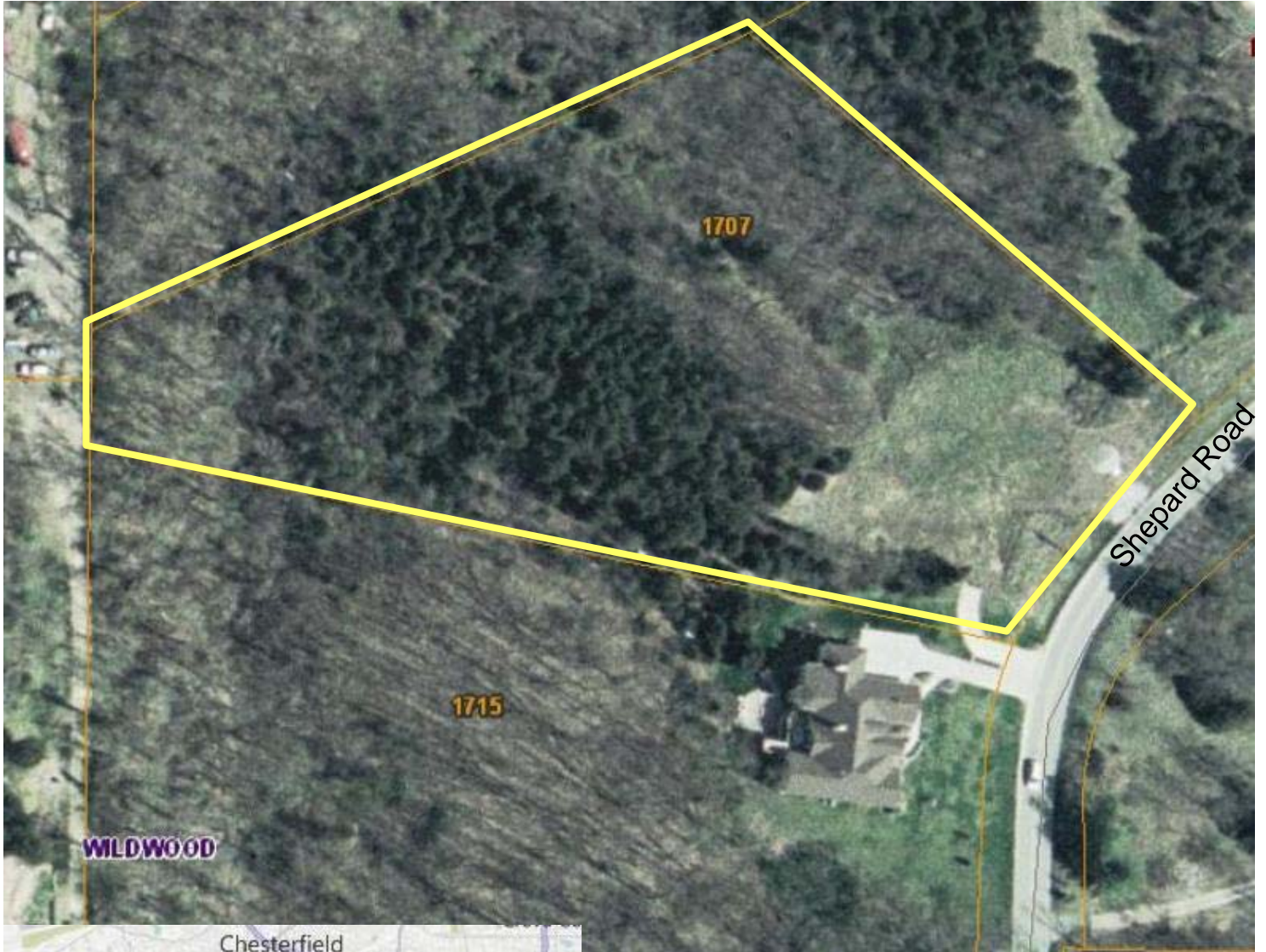
office 636-532-2171

fax 636-532-1920

www.buymud.com

HOLTHAUS
REALTY & DEVELOPMENT

FOR SALE



1707 Shepard Road
Wildwood, Missouri 63038

3 acres

For more information, please contact:

Ed Holthaus
314-378-0060
ed@buymud.com

Holthaus Realty & Development, Inc.
18102A Chesterfield Airport Road
Chesterfield, MO 63005-1117
Office: 636-532-2171
Fax: 636-532-1920
www.buymud.com